



# THE GOSSIP TREE

March 2019

Issue 301

News & Views from the Parish of FONTMELL MAGNA

*This issue is kindly sponsored by Eileen & Bill Hall to mark 20 years living in the village*

## Playground Appeal – Fundraising Cookbook

To build on the excellent fundraising started last year, we're now aiming to produce a 'Family Favourites' Cook Book which will help to fund the continuing restoration of the Children's Play Area at Fontmell Magna Village Hall.

Some of you may remember the Village Cook Book that was produced back in 1997. We'd now like to produce an updated version containing new favourite seasonal recipes – as cooked by you! Please send us your family's favourite recipe; it could be anything from starters to puddings, from jam to Jerusalem artichokes! Send us recipes for cakes, celebrations, festivals and speciality cooking, whatever your family loves and you'd like to share. If you have a family recipe that you would like to see included in our Cookbook then please send it by email to: [appeal.fontmellmagnavillagehall@mail.com](mailto:appeal.fontmellmagnavillagehall@mail.com) or drop a copy to Kim Masters (Play Area Rep), 3 Church Close, Fontmell Magna SP7 0NX.

We aim to get it compiled and printed by the Autumn so send them in now please! Include your name and contact details so we can credit you with the recipe.

Lisa Le Druillenc

## Temporary Closure of the Children's Play Area at Fontmell Magna Village Hall: Monday 25th February to Friday 15th March 2019

We are closing the play area for 3 weeks in order to carry out some resurfacing and repair work. We apologise for any inconvenience this may cause but we hope you will be pleased to see the small improvements that we are now able to make following a successful first session of fundraising.

The aim is to:

- Level off the play area around the slide and large fort climbing frame;
- Remove rotten timbers, wooden edging strips and some concrete;
- Replace the Playbark; and
- Make repairs to the metal slide.

The play area will not be safe to use while this work is going on.

If you have any questions, email: [appeal.fontmellmagnavillagehall@mail.com](mailto:appeal.fontmellmagnavillagehall@mail.com)

## Village Hall Bookings from Friday 1st March

We are still looking for a volunteer to take on the booking administration for the Village Hall (see February Gossip Tree for details). After several years as the Bookings Manager, Catherine Allard will be stepping down at the end of February and despite our best efforts we have not yet found anyone willing to take over from her.

In the meantime, we have put in place a temporary booking arrangement which will come into effect from Friday 1st March. Current bookings will be unaffected and hirers can continue to collect the key from the usual place.

For all hall booking enquiries please email [bookings.fmvh@mail.com](mailto:bookings.fmvh@mail.com). This is a shared email address and someone will get back to you.

If anyone is interested in taking on the hall bookings and would like further information, please contact our Chair of Trustees - Rosie-Anne Yates 07710 326 339 – [ra@yatesmail.org](mailto:ra@yatesmail.org) or the Secretary – Lisa Le Druillenc 07962 138039 – [lisa.ledruillenc@gmail.com](mailto:lisa.ledruillenc@gmail.com)

**Fontmell Magna Village Hall Management Committee – Registered Charity  
No: 301129**

## Road Closures

Penn Hill, Bedchester will be closed between 9.00am and 4.00pm between Monday 18th and Tuesday 19th March.

The C13 has been closed at Dinah's Hollow since early January and is not due to reopen until Friday 29th March.

Durweston Bridge will be closing from Monday 24th June until Sunday 21st July, but with temporary traffic management until mid-August.

## Remember

Clocks go forward by one hour at 1.00am (to 2.00am) on Sunday 31st March. This marks the change from Greenwich Mean Time (GMT) to British Summer Time (BST). There's more daylight in the evenings and less in the mornings (sometimes called Daylight Saving Time).

Last year, the EU Commission proposed to end the practice of adjusting clocks by an hour in spring and autumn after a survey found most Europeans (84% of 4.6 million respondents) opposed it. However, there have not yet been any detailed proposals and, in any event, they may not apply if the UK leaves the EU.

## Notices – March 2019

### St. Andrew's Church

Sun	3rd	8.00am	Holy Communion (BCP)
		9.00am	Sunday Breakfast (Village Hall - see page 2)
Wed	6th	7.30pm	Ash Wednesday Service at Iwerne Minster
Sun	10th	9.30am	Morning Worship
Sun	17th	9.30am	Holy Communion with choir
Thu	21st	7.30pm	Northern Harmony Choir (see page 2)
Sun	24th	9.30am	Holy Communion (CW)
Sun	31st	9.30am	Mothering Sunday Family Service

Prayers each Monday at 9.00am

### Parish Council Meeting

Mon 11th at 7.00pm in St. Andrew's School. The meeting is open to all members of the public and starts with Public Questions. Parish Clerk: Marianne Wheatley [clerk@fontmellmagnapc.co.uk](mailto:clerk@fontmellmagnapc.co.uk)

### The Surgery

Mon - Thu 8.00am to 12 noon. Enquiries 856700

### Village Shop & Post Office

Mon - Fri 8.00am to 6.00pm

Sat 9.00am to 1.00pm; Sun 9.00am to 12.00 noon  
Enquiries 811201

### Coffee in the Café

Tue at 10.00am

### The Tea Room Crafters

Wed 13th and 27th at 2.30pm. Details Barbara Humphreys [blueletterbox@btinternet.com](mailto:blueletterbox@btinternet.com)

### The Fontmell

Enquiries 811441

### St. Andrew's School

Fri 5th April - Break up for Easter

Tue 23rd April - Summer Term starts

### Fontmell Magna Toddler Group

Details Kelly Oakley 07792 425609

### Fontmell Magna Under 5's Breakfast Club

Every morning for St. Andrew's pupils from 7.45am at the Under 5's.

Details 812773

### 'In Home' Coffee Morning

Fri 1st 10.30am to 12 noon at Glebe Cottage, Parsonage Street (Ann & Michael Hobbs). Please do come and join us!

### Iwerne Valley Walking Group

Sat 16th - starting at 10.00am at the N.T. car park for King Alfred's Tower, Grid ST744352, postcode: BA10 0JS, afterwards to the Red Lion at Kilmington BA12 6RP. Leader: Judy on 811302.

### Bell-ringing

Tue 19th - Practice 7.30 to 8.30pm

Details Chris Bellers 811734

### Bin Collection Dates

W/C 4th & 18th - Recycling & Food

W/C 11th & 25th - Rubbish & Food

**Village Hall events - see over**

**Events in the Village Hall**

**Fontmell Magna & District Society**  
 Fri 1st at 7.30pm - 'Drowning in Plastic' by Dr Martin Price of Friends of the Earth.  
 Details Dick Stainer 811153

**Sunday Breakfast**  
 Sun 3rd at 9.00am. Run by St Andrew's Church. All welcome.  
 Details Janet Smith 811904

**Fontmell Films**  
 Wed 13th - 'The Children Act' (12A).  
 Doors open 7.00pm  
 Details Libby Gendall 811551

**North Dorset Wildlife Trust**  
 Wed 20th 'All about Deer' by Sam Hamer on the six species of deer in Britain.  
 Details Anna Davies 01258 880699

**Archive Society**  
 Thu 21st 4.00 to 5.30pm.  
 Details Roger Hillman 811878

**Garden Club**  
 Thu 21st at 7.30pm. 'Echinacea and Rudbeckia' by Martin Young.  
 Details Briony Long 812513

**Fontmell Magna Art Club**  
 Tue 2.00 to 4.00pm.  
 Details Sandra Jelbart 812468

**Carpet Bowls Club**  
 Thu 7th, 14th, and 28th and Fri 22nd at 7.30pm.  
 Details Gerry Bone 811814

**Dru Yoga**  
 Fri 9.30 to 11.00am.  
 Details Kirsty Elliot 829281

**Pilates**  
 Mon 5.30-6.30pm, 6.30-7.30pm.  
 STOTT Pilates Matwork & props.  
 Details Vicci Gillett 07940 961221  
[www.stable-bodies.co.uk](http://www.stable-bodies.co.uk)  
 Tue 9.15-10.15am, 10.30-11.30am.  
 Details Lyn O'Neill 07989 192424

**Taekwon-do**  
 Tue 8.00-9.00pm, Fri 6.00-7.00pm.  
 Details Sam Donohoo 07584 039351

**Zumba**  
 Thu - Zumba Fitness 9.00-10.00am.  
 Community Fitness 10.15-11.00  
 Details Abby Down 850867  
[zumbawithabbyd@gmail.com](mailto:zumbawithabbyd@gmail.com)

**To book the Hall, please email**  
[bookings.fmvh@mail.com](mailto:bookings.fmvh@mail.com)



On **Sunday 10th March** at 5.00pm, *Polly Josephine* will be entertaining us with a mixture of the best 1930s and 40s sultry jazz from singers including Ella Fitzgerald and Peggy Lee, uplifting 60s soul from Aretha Franklin and Etta James, and blues from Nina Simone and Bessie Smith. £10, £8 Friends and U18, £26/family. Prices include a hot drink.

On **Thursday 21st March**, *Northern Harmony* vocal ensemble will be singing in St. Andrew's Church at 7.30pm. Their thrilling harmony singing covers South Africa, Corsica, Georgia, the Balkans and many American traditions. £10, Friends of Springhead and U18 £8, Family £26.

If you fancy a bit of singing yourself, why not sign up for a workshop with *Northern Harmony* between 4.00 and 6.00pm at Springhead prior to their performance? Learn a selection of songs from the wide variety of genres that the group specialises in, including South African songs, polyphony from Georgia, Corsica and the Balkans, shape-note singing and quartet gospel, and medieval motets. No experience is required, just a love of singing. This will be held at Springhead and is £6 – spaces are limited so early booking is advised. Tickets for the performances are available at [www.ticketsource.co.uk](http://www.ticketsource.co.uk). Alternatively, please send a cheque, payable to the Springhead Trust, with a stamped addressed envelope to Springhead, Mill Street, Fontmell Magna, SP7 0NU.

**Neil Craig 1943 - 2019**

It is very sad news to announce Neil's death on Monday 14th January at his home in Henley-on-Thames. He died peacefully whilst watching his favourite golf channel on TV. He is survived by Anne, his Texan partner, and two children, Selina and Julian, of whom he was fiercely proud.

Neil, born in Sheffield on 12th February 1943, graduated in economics from Manchester University in the early 1960s. He moved to Fontmell - 'The Old Toll House' - with his wife, Pat, and children in 1983. Many still recall their legendary Christmas parties there. After nearly twenty years in Fontmell, and following his beloved Pat's diagnosis with advanced Alzheimer's in 2002, he moved back to Oxfordshire so he and the children could care for her.

Neil will be fondly remembered as a stalwart of community activity in Fontmell. For many years he was club secretary of Fontmell Magna Cricket Club. Neil was a genuine sports nut: he was a lifelong Sheffield Wednesday supporter (his grandfather had managed Wednesday in the 1920s), he played (and umpired) cricket and he kept up a mean golf handicap.

After some lonely years following Pat's death, during a memory lane trip to Houston, Neil found himself chatting to a Texan lady called Anne in a Starbucks café. It resulted in a second wind romance and lasting partnership for both as they alternated life between Henley and Houston, fitting in all their travel adventures in between. Last year Neil completed his long-time goal of visiting all fifty US states. In amongst his golf, bridge, and travel interests, and the wide circle of friends he enjoyed, Neil still managed to fit in visits to Fontmell, a place he never stopped loving, calling it 'God's country', and he remained an avid reader of 'The Gossip Tree'.

Right up to the very end, Neil and Anne were planning their next adventure of driving from the north to the south of the USA; Anne now intends to do this journey in his honour. He will be much missed on both sides of the pond!

Rest in Peace, Dear Friend.

Neil and Rita Howcroft



**Community Land Trusts**

On Friday 8th February, a small group met and decided to investigate the possibility of setting up a Community Land Trust (CLT) in Fontmell Magna. We are taking this action because we feel strongly that the development of the village depends on it retaining essential amenities, such as the village shop, and also providing affordable housing. A CLT is a community-led organisation set up to own assets for the benefit of that community. These assets can include land, housing, shops and pubs. The CLT is run by people from the local community and everyone living or working in the community should have the opportunity to become members.

Our first step involves taking advice both from members of other CLTs and from organisations set up to help with the formation of CLTs (such as the National CLT Network and Wessex Community Assets). When we have formed a clear idea of the steps needed to set up the CLT we will hold a public meeting to inform the community of our plans and ask for volunteers to join us to work towards achieving these objectives.

We firmly believe that a CLT can play an important role in keeping the community sustainable by enabling appropriate development that meets the aspirations of the local community. If you want to take part in this initiative please look out for the announcement of our public meeting and come along to learn how you can become involved, or get in touch with one of us.

Dick Stainer, Robert McCurrach, Roger Thomas, Robin East

**Easter Flowers 2019**

Easter is late this year – 21st April. Ash Wednesday, the beginning of Lent, is 6th March, when St. Andrew's Church will be without flowers until Easter Sunday.

To enable us to decorate the church with great splendour, I am once again appealing to residents of Fontmell Magna to donate to the flower fund in memory of a loved one. There will be a plate at the back of the church from Sunday 10th March, or give to me at 15 St. Andrew's View or to Barry or Janet, Church Wardens.

Thanking you in appreciation of your generosity.

Joy Murphy

**Iwerne Valley Walking Group**

**Saturday 19th January - Moreton near Dorchester**

We stood outside the Moreton Tea Rooms in the torrential rain wondering if any brave souls would ignore the weather and join us for the walk. Eventually 13 of us and 2 dogs set off in the relentless downpour. As we walked over the bridge across the river Frome we were struck by a flash of blue and watched a kingfisher fly down the bank. The walk took us on part of the "Lawrence of Arabia trail" which goes to Clouds Hill but as it is closed at this time of the year, we left that route for another time. The walk was short thankfully and took us through heathland and mixed forest and then back to where we started.

We then visited the church of St Nicholas famous for its etched windows. The church received a direct hit from a German bomber in 1940 and it largely destroyed much of the building. Over the years it was rebuilt and Lawrence Whistler was commissioned to produce engraved glass to replace the windows. Some of the group walked up the road to visit the grave of T.E. Lawrence while others took shelter in the Tea Rooms. Two ex-members of the group joined us for an enjoyable lunch where we were able to catch up with their news.

It is said "There is no such thing as bad weather, just unsuitable clothing" - not sure if we would agree!  
Jane & Neil Davies



**Fontmell Film Night**

Our film on Wednesday 13th March is "The Children Act" starring Emma Thompson, Stanley Tucci and Fionn Whitehead. Based on the novel by Ian McEwan, the film tells the story of an eminent High Court judge who must decide if she should order a life-saving blood transfusion for a teenager whose family are refusing medical treatment for religious reasons.

Tickets £6 from Fontmell Village Shop in advance or £6.50 on the door. Doors and the bar open at 7.00pm with the film starting at 7.30pm. We look forward to seeing you and please don't forget your cushions! For more information please call Libby on 811551.

Next film: Wednesday 10th April 'King of Thieves' (15)

**Fontmell Magna and District Society**

Friday 1st February – Margaret Marande – "The Hardy Way Challenge"

We all know that we live in a special county, but Margaret's talk and photographs reminded us of how beautiful Dorset really is. Margaret created the Hardy Way long distance footpath nearly twenty-five years ago. She had wanted to combine her fascination with Thomas Hardy and her love of walking into a single project when she retired.

When her partner Harry died in 2017, she decided to walk the whole of the Hardy Way to raise money for charity. Her talk took us through all the ups and downs of this journey and right round the county, connecting all the villages to places and events that feature in Thomas Hardy's writings. For the audience it was a wonderful way to get to know Dorset without having to walk a step.

Our next talk on Friday 1st March is entitled 'Drowning in Plastic'. Dr Martin Price of Friends of the Earth will talk about the reasons why we have such a massive plastic waste problem and suggest ways in which we can deal with it.

Michael Golberg



**The Great British Clean Up!**

**Save the Date!**

A Community litter-picking morning event in Fontmell, Bedchester and Hartgrove is being arranged for:

**Sunday 7th April.**

Details will follow but please put the date in your diary now; willing volunteers will be essential!

**Village weather for January 2019**



A cold, dry start to the year. Small amounts of rain fell from mid-month, ending in cold unsettled weather with some snow. 11 rain days. 2 days snow. 23 ground frosts. 17 air frosts. 2 gales. No thunder or hail.

Comp. Figures	2019	2018
Rain (most 11.4 mm on 18th)	43.4 mm	90.8 mm
Sunshine	48.8 hr (av. 1.57)	48.4 hr
Max mean temp. (highest 11.6 °C on 25th)	7.26 °C	9.44 °C
Min mean temp. (lowest - 5.1 °C on 31st)	0.22 °C	2.6 °C

As with last year, 2nd February (Candlemas), was cold and sunny. According to weather folklore: "If Candlemas Day be fair and bright, Winter will have another flight". Last year, this proved correct when the 'Beast from the East' struck on 1st March. Perhaps we are in for a repeat. On the other hand, Punxsutawney Phil, the groundhog, could not find his shadow this year, which indicates that we are in for an early spring (Phil cast a shadow last year).

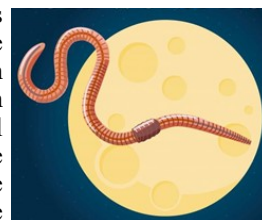
There are a number of other predictions of weather. 13th January was St Hilary's Day, which folklore suggests is the coldest day of the year. This was not borne out this year, however.

Another is St Paul's Day, on 25th January:

"If Saint Paul's Day be faire and clear,  
It doth betide a happy year;  
But if it chance to snow or rain,  
Then will be dear all sorts of grain:  
If clouds or mists do dark the skie,  
Great store of birds and beasts shall die,  
And if the winds do fly aloft,  
Then wars shall vex the kingdome oft."  
The weather this 25th January was mild, cloudy and breezy, which is not great news for the birds and beasts.

**Full Moon – Thursday 21st March**

The March Full Moon is the last of three Supermoons in a row in 2019. This Full Moon is known as the Full Worm Moon, or as the Full Crow Moon, the Full Crust Moon, the Full Sap Moon, or the Lenten Moon.



The day before, Wednesday 20th March, is the vernal equinox (the first day of spring) when the sun shines directly on the equator so that there are nearly equal amounts of day and night.

In fact, because the earth is slightly tilted, there will be equal amounts of day and night here in Dorset, some two days earlier.

**Compost Corner**



You can learn a lot through travel and, on a recent visit to Spain, I was given a free masterclass in rose pruning.

This was at the UNESCO world heritage site, the Alhambra in Granada famous for its ancient

palaces, Moorish courtyard gardens and immaculate planting.

I visited in winter when the bare bones of the gardens could be appreciated and an army of gardeners was preparing the borders for the year ahead.

There are hundreds of rose bushes and each was pared back so hard that you'd think it was perhaps a little too enthusiastic. But that is exactly what a rose appreciates: really hard pruning with razor sharp secateurs, beautiful clean cuts to show off the robust dormant buds.

Looking at my own efforts in our garden I certainly need to be a little less timid in my pruning technique and a lot tougher with my modest collection of roses.

A little nearer home is the quintessentially English garden at a National Trust Property, Mottisfont Abbey near Romsey, Hampshire, and here you can enjoy a truly spectacular display of roses in early summer.

Alison Main

**Helena Rigby (1930-2019)**

Helena died on Tuesday 22nd January, aged 89. She had lived in the village, at Yew Tree Cottage, 66 West Street, since 1985.

Donations at her funeral were for St Andrew's School, which she had supported both as a governor and volunteer for many years.

**Thank you**

Thank you to all concerned for such a magnificent display of snowdrops in Brookland Wood.

**Defibrillator**

The February issue included an article on the three defibrillators recently installed at St. Andrew's School, the Bedchester phonebox and at the old school on the Shaftesbury to Sturminster road.

The latter defibrillator was effectively deployed on the morning of Friday 1st February and the patient (who lived locally) was taken by air ambulance to Yeovil. Unfortunately, despite the successful deployment of the defibrillator, the patient did not survive.

**Another Bennett Policeman - William Bennett (1840-1921)**

The March 2018 Gossip Tree (Issue 289) featured John Light Bennett, who became Chief of Police of Gibraltar. There was another Bennett from the parish, although not thought to be a relation of John Light Bennett, who became a policeman.

The Dorset Constabulary began to be formed in the autumn of 1856. Despite low pay and long hours, its regular income and job security, not to mention free housing, benefits in kind, medical care and pension, must have offered significant attractions to those facing an uncertain future depending on agriculture. William Bennett must have joined soon after the constabulary was formed. In the 1861 census, he is recorded as a police officer lodging at Higher Daggens in Holwell in the district of Alderholt, Cranborne.

In 1862, he married Ann (or Anna) Maria Woodvine in the district church of Alderholt in the parish of Cranborne. They went on to have eight children, seven daughters and one son. In 1871, William was a policeman in Newtown, Kinson. In 1881 they lived in The Police House in Stalbridge (No. 1 Westminster Cottages – Lot 181d in the 1918 sale) and in 1891, they were in the Police House in Melbury. Ann Maria died in 1897 aged 55 and is buried in Cann (her address was given as Belmont Cottage). It is not clear where William was in 1901 but, in 1911, William was a widower and police pensioner aged 71 living in Cann. He died in 1921.

While little more has so far been discovered about William's police career, we know a little more about his background. William was baptised in St. Andrew's Church on 12th April 1840, the child of Elizabeth Bowles, age 19, father unknown. In the Baptism Register, his name is recorded as William Bennett Bowles, suggesting that his father was called Bennett. He was certainly known as William Bennett in later life. His mother, Elizabeth, was the daughter of Philip and Ann Bowles. Philip (1789-1881) was an agricultural labourer. He married Ann Galpin (1779-1867) in 1813. Ann had already had a child, James, in 1808. They went on to have three daughters: as well as Elizabeth, there were Mary and Sarah.

In the 1841 census, the Bowles family were living in West Street near Blandfords Farm. As well as the three daughters, the family was also recorded as including Emily Sarah aged 2 and William aged 1. Emily Sarah was baptised in St Andrew's Church on 31st March 1839 and she was recorded as the child of Mary Bowles (no father was named). Emily appears to have died in 1855, aged 15, and is buried at the Church.

By the 1851 census, the Bowles family was living in 'Smiths Hole' (possibly part of what is now Watermill Cottage, Church Street). As well as Philip and Ann, their 'daughters' Mary (now a dressmaker) and Emily Sarah were living with them, together with their grand-son William Bennett, now aged 11 and described as a shepherd boy.

William's mother, Elizabeth, was no longer living with the Bowles family. In June 1850, she married James Spicer (1801-1889), a carpenter. She was actually James' third wife (as well as being 20 years his junior). He had married Sarah Tuffin (1798-1839) in 1822, with whom he had six children, and Hannah Tuffin (1806-1843) in 1842. Hannah produced a daughter but died soon after. James was also to outlive Elizabeth (she died in 1885, age 65). They had a son, Steven, four months before they were married and a daughter, Fanny, who died aged 4.

The Dorset Constabulary regulations specified that recruits had to be literate, 5ft 8 inches or more in height and between 22 and 35 years old. William must have been born some time before 12th April 1840, the recorded date of his baptism, as otherwise he would not have been 22 or over by the time of the 1861 census when he was already a police officer. And, as a shepherd boy, he would have done well to have become literate.

Chris Bellers, Fontmell Magna Village Archive Society

**The Directory and Parish Council elections**

The Fontmell Magna Directory sets out the current Parish Councillors. This will change from Thursday 2nd May, when elections for all 163 parish and town councils in the Dorset Council area will take place.

Fontmell Magna Parish Council will be seeking eligible residents to stand as parish councillors (up to a maximum of seven) to support the work and involvement of the Parish Council in the life of this community.

All those seeking election or re-election will need to complete a Nomination Paper. Nomination Papers must be returned between Monday 18th March and Wednesday 3rd April. From April, there will be only two levels of local government in Dorset: the unitary councils (one covering Bournemouth, Christchurch and Poole, and the second, Dorset Council, covering the remainder of Dorset) plus parish and town councils.

This new structure will mean that parish councils will be even more important in influencing how quality services are delivered to their local community. By getting involved, you could make a real difference.

The Parish Council is keen to represent ALL parts of the community so applications are welcome from people of all ages including parents of school age children, younger and older people, in fact anyone who would like to have a say in how the Parish is managed!

For further information on the role of a parish councillor, please feel free to talk to one of the existing Parish Councillors or to the Parish Clerk at [clerk@fontmellmagnapc.co.uk](mailto:clerk@fontmellmagnapc.co.uk)

*The views expressed in this publication by contributors are not necessarily those of the Editor or of the Committee of The Gossip Tree. Last copy date for the next issue is **Sunday 24th March 2019**. Contributions for consideration should be submitted as early as possible to the Editor, Chris Bellers, via e-mail to [chris.bellers@hotmail.co.uk](mailto:chris.bellers@hotmail.co.uk) or phone 811734. Please also contact the Editor if, rather than have your Gossip Tree delivered to you, you would like to be emailed a copy and benefit from seeing the pictures in colour (while also saving us printing costs), or if you would like to sponsor an issue (cost £30).*