



THE GOSSIP TREE

News & Views from the Parish of FONTMELL MAGNA

May
2017
Issue 279

This issue is kindly sponsored by Barbara and Sue in loving memory of **John Enderby** who died on 10th May 2014.



John and Barbara moved to Dorset from London, after John took early retirement due to ill health. As soon as they had settled in, John joined nearly every club within the Fontmell area, became a Governor of St. Andrew's School, and became very involved in our Church.

One of his biggest achievements was helping to set up, and then editing and delivering, The Gossip Tree for many years. While he was Editor, he hand-wrote everything (he wouldn't have anything to do with computers) and he used to 'badger' people to write articles for it. When Mike Wharton took over, he found it more and more difficult to read John's writing, so John very reluctantly asked me to type articles for him.

After his stroke in 2006, and having spent four months in hospital, John had to resign from most of the clubs, but stayed

interested in things happening in the village until his death from a congested heart. He has been a difficult act to follow!

Sue Mercer

Please can you help?

Just before my 70th birthday last year, my husband Bill asked me to let him know what I'd like as a birthday present. After much thought, it was a toss-up between a yacht or a new Hoover! Then a brain storming idea, I thought how about a WING WALK, why wouldn't a 70-year old want to stand on the wing of a bi-plane and fly over North Dorset? So, after running it past my 'friends' (who didn't try to talk me out of it, but openly encouraged me) I decided to go ahead and book it. Bill has remained stunned about the whole scenario, but willingly paid up.

I feel that here's an opportunity to raise some money for charity. Last year I had a bit of a run in with non-Hodgkin lymphoma, but with the super care and brilliant decisions made by the staff of Pembroke Unit at Salisbury District Hospital, I'm now in remission, with a healthy future in front of me. So I feel it's now payback time. Also, living in Fontmell Magna, I've noticed that the village on several occasions has had the services of the Dorset & Somerset Air Ambulance. In the future, any one of us might need their help, so I've decided that any sponsorship money I can raise will be divided equally between the two charities.

The flight is booked for Sunday 21st May (weather permitting) at about 1.30pm at Compton Abbas Airfield. If you can help with sponsorship, Jan & Rick at the Village Shop have kindly allowed me to put sponsorship forms on the counter, or ring me on 811476, or email me on eileenandbill@btinternet.com

You're all welcome to come and watch or, if you hear the noise of a demented woman flying over the village on the 21st, wave – it will be me! Thank you so much, in anticipation.

Eileen Hall



PEMBROKE UNIT

Helping local people with cancer and blood disorders

Registered charity number 1052284



Notices – May 2017

St. Andrew's Church

Sun	7th	8.00am	Holy Communion (BCP)
		9.00am	Sunday Breakfast (Village Hall - see over)
Sun	14th	11.00am	Family Service
Sun	21st	11.00am	Holy Communion with choir
Sun	28th	11.00am	Holy Communion (CW)

Fri 26th 10.30am Open House
Prayers each Tuesday at 9.00am

Parish Council AGM and PC Meeting

Mon 8th in St Andrew's School, immediately following the Annual Parish Meeting which starts at 7.00pm.

Acting Parish Clerk: Robin East 812349

Neighbourhood Plan Working Group

Mon 15th in St Andrew's School at 7.00pm.
Details Michael Humphreys 07850 875429

The Surgery

Mon - Thur 8.00am - 12 noon. Enquiries 812058

Village Shop & Post Office

Mon - Fri 8.00am to 6.00pm
Sat 9.00am to 1.00pm
Sun 9.00am to 12.00 noon
Enquiries 811201

The Fontmell – Opening Hours

Bar 11.00am to 10.00pm (Sun, Mon & Tue) 11.00pm (Wed & Thur), 12.00 midnight (Fri & Sat)
Kitchen 12.00 noon to 2.00pm (2.30pm Fri & Sat) & 6.00 to 9.00pm (9.30pm Fri & Sat); Sun 12.00 noon to 8.00pm

Iwerne Valley Walking Group

Sat 20th 10.00am, starting from The Fox and Hounds, The Green, East Knoyle SP3 6BN.
Leader: Pauline Morphy (811972)

Bell-ringing

Tue 16th - Practice 7.30 to 8.30pm
Details Chris Bellers 811734

Bin Collection Dates

W/C 1st, 15th & 29th - Recycling & Food
W/C 8th & 22nd - Rubbish & Food

St Andrew's School

Fri 26th - Break up for Half Term
Tue 6th June - Back from Half Term

Village Hall events - see over

A350 closure Monday 22nd – Sunday 28th May

Dorset Highways advise that the A350 from Fontmell Magna to the Royal Chase Roundabout, Shaftesbury, will be closed between 9.00am and 4.00pm to carry out surface dressing to the road.

The road will be open at night and allowances for school transport will be made. A small surplus of loose chippings will remain on the surface for up to 48 hours.

(Editor's note - hopefully, Dorset Highways will also do something about the A350 from Fontmell to Blandford, which is in an even worse state!)

Events in the Village Hall

Village Hall Committee
Wed 3rd at 7.30pm.
Details Chris Bellers 811734

Local Election
Thur 4th 7.00am to 10.00pm.

Fontmell Magna & District Society
Fri 5th at 7.30pm.
AGM and members' evening.
Details Dick Stainer 811153

Sunday Breakfast
Sun 7th at 9.00am. Informal breakfast
run by St Andrew's Church.
All welcome. Free!
Any questions Janet Smith 811904

Fete Planning Meeting
Wed 10th at 7.30pm.
Details Hannah Lister 811568

Archive Society
Thur 18th 4.00 to 5.30pm.
Details Roger Hillman 811878

Pilates
Mon 6.30 to 7.30pm.
STOTT Pilates Matwork with props.
Details Vicci Gillett 07940 961221
www.stable-bodies.co.uk
also
Tues 9.15 to 10.15am and 10.30 to 11.30am.
Details Lyn O'Neill 07989 192424

Fontmell Magna Art Club
Tues 2.00 to 4.00pm.
Details Sandra Jelbart 812468

Carpet Bowls Club
Thur 11th, 18th & 25th at 7.30pm.
Details Gerry Bone 811814

Taekwon-do
Tues 8.00 to 9.00pm.
Fri 6.00 to 7.00pm.
Details Sam Donohoo 07584 039351

To book the Hall, call Catherine
Allard on 812047 or email
catherineallard1980@hotmail.co.uk

Fontmell Magna and District Society

Friday 7th April – Bill Owen – 'Shaftesbury Abbey, 600 Years of History'

They pledged themselves to lifelong chastity; but the flesh is weak and on occasion the young nuns of medieval Shaftesbury yielded to temptation. We know this from detailed records kept at the abbey throughout its history. Bill Owen painted a vivid picture of life in the abbey from its foundation in 888 by Alfred the Great until its closure in 1539 under Henry VIII. In all this time, the abbey was not just a religious centre but also a centre of great commercial activity. It owned large amounts of land including the parish of Fontmell Magna and, although the abbey building itself no longer exists, numerous manor houses and barns on land formerly belonging to the abbey are still here today. This was a fine note to end on for our season of talks. Our last event before the summer is our AGM on Friday 5th May. It is an open meeting and everyone is invited, particularly if you would like to join the committee and help to organise the talks. Please bring a plate for the finger buffet, the drinks will be provided. There will also be a quiz with some questions about photos of Venice that you will be shown.

Michael Goldberg

Fontmell Magna Development Plan - Option Consultation on Infrastructure and Traffic Management

It was encouraging that so many people visited and responded to the Options Consultation held on Saturday 18th March which considered housing and environment. Thank you to all who contributed.

The second part of the consultation, on business and employment growth, transport, community energy saving, broadband and network coverage, and important infrastructure, will be held in the **Village Tearooms on Friday 5th May from 2.00 to 5.00pm.**

We are grateful to Jan and Rick Attfield for hosting this event and very much hope that you will visit; you could enjoy a drink or cake whilst you look at the proposals. The working group will be available to answer questions and listen to your comments and you will be able to respond by completing a survey form available on the day (or online) and handing it in to the shop. All the information presented will be available on the Parish Council website www.fontmellmagnapc.co.uk from Friday 5th May.

The Neighbourhood Plan proposals relate to changes to highways, public transport, youth organisations, equipment and facilities, the surgery and associated provision, business growth, allotments, a parish website, broadband and network coverage, and assets of community interest.

We look forward to your participation in this important consultation.

Neighbourhood Plan Working Group fmplanbh@btinternet.com

Sunday Breakfast @9

St Andrew's Church first Sunday breakfast was a success!

The tables were prepared and the checked cloths were in place with vases of flowers atop. A lovely mix of people of all ages started to appear – we were 36 in total which was perfect for our first try! Then the food started to flow – bacon rolls, sausage butties, boiled eggs, croissants, toast and more. It was all washed down with copious cups of 'proper' coffee, tea and orange juice. There was a feel of a relaxed and unhurried Sunday morning with lots of chatter and many a smile.

The theme for the short Thought for the Day was based on the song "Come all you vagabonds" – well we weren't all vagabonds but the message was clearly that ALL were welcome!

Everyone left expressing their support and promising to come again which has to be a good sign.

Will you join us next time? Open to all comers – that's on Sunday 7th May in the Village Hall at 9.00am. Hope to see you there!

Carol Hillman

Your Village Fete Needs You!

A well-attended first planning meeting for the 2017 Fete took place on Wednesday 22nd March, when it was decided that the theme for this year's Fete, to be held on Saturday 16th September, would be 'Harvest'. The organisers are keen to get the local community involved to create a fun-packed event that the whole family can enjoy. New additions for this year include a rodeo bull, hog roast and crockery-smashing stall. Entertainment comes in the form of local musician, Tom Clements, who will play two sets over the course of the afternoon.

Chairperson, Hannah Lister, explains, "We need as many villagers as possible to join in and support the Fete, from setting up gazebos to running a stall. People don't need to come to all the meetings to get involved on the day."

The next Fete planning meeting is on Wednesday 10th May in the Village Hall. If you have any ideas or would like to help out, please get in touch with Hannah on 811568 or hannahleadbetter@hotmail.com

North Dorset Wildlife Trust

May Dawn Chorus Walks on Saturday 13th May and Saturday 20th May – meet at Bere Marsh Farm at 4.45am for a 5.00am start. These events include a full Farmhouse Breakfast after the walk. The cost is £12 per person, payable in advance. Booking is essential as numbers are strictly limited. Telephone Anna Aubrey on 07970 903679.

Neighbourhood Plan – Options Consultation

Thank you to everyone who attended the Consultation Event in the Village Hall on Saturday 18th March. Over 90 people visited the event, and we had a total of 71 completed questionnaires. We are very pleased that, overall, residents agree with most of the proposals that the Neighbourhood Plan working group have come up with.

We received many useful comments, particularly regarding other potential wildlife corridors, and potential development sites. All these comments will be taken into account in compiling the group's draft plan, which will be consulted on later in the year. At the same time, the responses to the consultation questionnaire, including all the comments made, will be published.

Annual Parish Meeting - reminder

The Annual Parish Meeting will be held on Monday 8th May at 7.00pm in St. Andrew's School immediately before the Parish Council AGM and meeting held every other month.

Money Matters - Part 1

Completely separately from Brexit, various changes are being made to our currency. Part 1 of 'Money Matters' considers the changes being made to our paper (as was) money. Part 2 will cover our coinage.

£5 Note

The new polymer £5 note, featuring Winston Churchill, entered circulation on Tuesday 13th September 2016. On **Friday 5th May 2017**, paper £5 notes featuring prison reformer Elizabeth Fry will **cease to be legal tender** and will no longer be accepted by shops. Some banks and building societies might still accept paper £5 notes after 5th May, but this is at their own discretion. The Bank of England will continue to exchange the old £5 notes for all time, as it would for any other Bank note which no longer has legal tender status.

Despite concerns (from, amongst others, vegans, vegetarians, Hindus, Sikhs and Jains) over the new polymer note containing animal fat traces (small amounts of tallow), the Bank of England has no plans to change the new note, or to delay the issue of the new £10 note described later.

Some new £5 notes are worth a great deal more than £5:

*Four £5 notes were engraved with tiny portraits of Jane Austen. The gold engraving can be seen with the naked eye, but a microscope is needed to catch the detail. Experts value the artworks at around £50,000 each.

*Notes with the serial numbers AK37 007533 and AK37 007012 have sold for £5,000 each.

*A note with the serial number AA01 444444 was sold for £60,100 in March. Other notes with early serial numbers, such as AA, AB, AC and AK, have been sold to collectors for thousands of pounds. Most, however, go for something in the area of £200.

*The very first polymer £5 note, AA01 000001, was given to the Queen and lies in her private collection. It is unknown what its value would be if ever brought to auction.

£10 Note

The new polymer £10 note will enter circulation in summer 2017. The current £10 note was introduced in 2000, featuring Charles Darwin. When it was announced that the only woman to feature on the back of a note (Elizabeth Fry on the £5 note) was to be replaced by Churchill, the author Caroline Criado-Perez started a petition to get more women on banknotes. Nearly 36,000 had signed the petition before the Bank of England announced that the new £10 note would feature Jane Austen.

£20 Note

The new polymer £20 note featuring JMW Turner will enter circulation by 2020.

£50 Note

There are currently no plans to replace the £50 note featuring Boulton and Watt (the developers of steam engines).

Chris Bellers

Events at Springhead on Monday 29th May

Photography courses with Edward Parker, £25 each, booking essential:

10.00am to 1.00pm - Garden & Landscape.

2.00 to 5.00pm - People and Portraits.

Open garden with stalls, 10.00am to 5.00pm.

Café serving lunch & light refreshments, dogs on leads welcome, assisted wheelchair access: £3.50/Friends and U16 free

www.springheadtrust.org.uk

Telephone 811853

Iwerne Valley Walking Group**Trooping from the Trooper**

On Saturday 18th March, a group of 14 people and 2 dogs met outside the Trooper Inn at Stourton Caundle to start our monthly walk. The group included John who at 6 years old walked the 4 miles happily and chatted non-stop to everyone.

The walk started with a visit to the village church of St Peters. As it continued, we soon realised that there were a lot of stiles to negotiate, some easier than others to climb over. It was fairly gentle terrain and not too muddy. Thankfully the weather was kind, if a bit windy, but at least the forecasted rain stayed away. We stopped regularly to admire the stunning views across the beautiful Dorset countryside.



We arrived back at the Trooper to a very enjoyable selection of food we had pre-ordered.

Jane & Neil Davies

Village weather for March 2017

Relatively mild with frequent damp days but low total rainfall.

20 rain days. 2 air frost. 8 ground frost. 2 gales.

Comp. Figures	2017	2016
Rain (most 11.2 mm on 21st)	68.3 mm	97.8 mm
Sunshine	97.4 hr (av. 3.14)	108.2 hr
Max mean temp. (highest 19.3 °C on 30th)	13.06 °C	10.4 °C
Min mean temp. (lowest - 0.6 °C on 21st & 23rd)	4.95 °C	1.24 °C

Full Flower Moon – Wednesday 10th May

The Full Moon in May is traditionally known as the Full Flower Moon, as it was the time of year when spring flowers appeared in abundance. It is also sometimes known as the Big Leaf Moon, the Corn Planting Moon or the Milk Moon.



The Arapaho Indians referred to this Full Moon as "when the ponies shed their shaggy hair."

Over the nights following 10th May, the Moon will rise around an hour later each day, becoming prominent later in the night, high above the horizon. Within a few days, it will only be visible in the pre-dawn and early-morning sky.

By the time it reaches last quarter, a week after full moon, it will rise at around midnight and set at around noon.

Easter Flowers – St Andrew's Church

I would like to thank all those who responded so generously financially to last month's appeal for donations, and especially to my team of managers who created beautiful exhibits for everyone to enjoy.

The church, as usual, looked superb, after the long winter and no flowers during Lent.

Many, many thanks. Joy Murphy

Compost Corner

We all know that bees are very important pollinators but some fascinating research has just been released that reveals that plants pollinated by bees are more fragrant than those pollinated by other insects like hover flies, yet another reason to encourage them into our

gardens. It can really help bees if you:

- Don't use pesticides when plants are in flower.
- Plant varieties that are attractive to bees e.g. lavender, foxgloves, sweet william.
- Grow bee-friendly plants throughout the growing season so there is a continuous supply of pollen and nectar.
- Avoid plants that have complex, double or multi-petalled flowers which are not easy for bees to source pollen. Rhododendron's nectar is actually toxic to bees.

We have already lost some varieties of bumblebee and we must do our bit to protect the many remaining varieties.

Alison Main

Bedchester Update

Regarding the page 4 article in the April edition, I would advise that there was a Bedchester name board on the road from Fontmell until a couple of years ago when it was demolished by (presumably) the hedge-trimmer. I saw it lying damaged in the hedgerow shortly after the trimming had taken place and attached is the image of it

existing from google maps.

Fontmell resident

**Garden Club**

Our annual visit to Castle Gardens in Sherborne is on Wednesday 3rd May. Arrive at Castle Gardens at 6.30 for 6.45pm for a short talk, after which the Garden Centre is open with a special discount for Club members. Full details will be circulated to members. Robert McCurrach

Buddleias

The Buddleias were all pruned in less than the time allotted, thanks to you kind helpers. We were blessed with spring sunshine and cheerful birdsong. Let's hope for a sunny July and August for the butterflies to enjoy the end results. Thank you all so much. Judy and Peter Westgate

Continuing our series of articles featuring Bedchester.

Woodbridge Mill

Woodbridge Mill stands between two hamlets, Bedchester and Hartgrove. A former corn mill, the mill building and house were rebuilt in 1862 after the previous buildings were largely destroyed by fire. The watermill was powered by two millponds, one fed by the Sturkell and the other by Twyford Brook.

In 1839, Woodbridge Mill was run by Richard Bishop. Richard was the son of Samuel Bishop who ran Springhead, then known as Higher Mill. Richard had previously run Higher Mill for many years and married Mary Bennett, the sister of John Light Bennett of Hartgrove House. Their daughter, Mary Bennett Bishop, later married John Jesse.



In 1844, Job Rose (1812-1871) became the miller. Job was reputed to weigh over 30 stones, and was featured in the poem by local poet William Barnes titled 'John Bloom in Lon'on'.

"Athirt the chest he wer so wide
As two or dree ov me or you,
An' wider still vrom zide to zide,
An' I do think still thicker drough."

A staunch Methodist, Job and his wife Hannah had four sons and four daughters. The youngest daughter, Kate, was later to marry John Tapper. On Job's death, one of the sons, Tom, took over as miller, while another son, Charles, assisted. By 1881, Tom Rose had gone on to become the farmer at Bedchester Farm (see Gossip Tree, October 2016) and Charles Rose took over as miller. However, he died aged 37 in 1884.

According to the 1885 and 1889 Kelly's Directory, the mill was run by "Jesse Brothers". Although it is not clear who these brothers were, they were probably related to John Jesse. Job Moyle was the miller in 1891, and Jeremiah Tuffin in 1895.

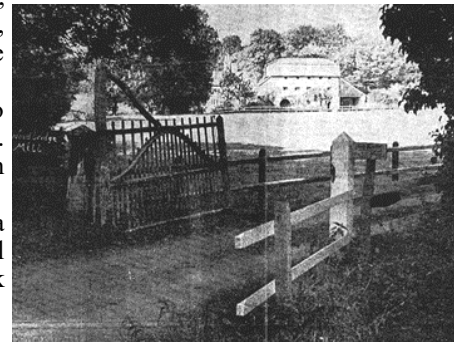
By 1898, William Jesse was the miller, having farmed at Sixpenny Farm for the previous 10 years or so. William's father was John Jesse, who had married Richard Bishop's daughter, Mary Bennett Bishop. William and his wife, Kate Rose Jeanes, had four sons and two daughters. Kate died in March 1899 (aged only 36) shortly after their last child, Frank, was born. Frank himself was killed in the First World War and is named on the Fontmell Magna War Memorial. William also suffered from ill-health and moved to Black Ven Farm, Hartgrove, where he died shortly after in 1905 aged 49.

In 1907, the miller was Joseph Doggrell and, in 1911, Henry Roper. The mill appears to have ceased to operate soon after. In the Glyn sale of 1919, the mill was bought by Henry John Tapper (known as John). He had married Kate Rose (Job and Hannah's youngest daughter) in 1878 when a farmer at Gupples Farm, Hartgrove. The couple farmed Cowgrove Farm, Hartgrove and then Burden's Farm (now Haygrove Honey Farm), Twyford. John and Kate had five children. One of their two sons, William, became a Methodist Minister. He married Emma May and had two children, Patricia June and Geoffrey, who became a doctor. For 30 years from 1960, Dr Tapper was the local GP, as well as being a Borough, and then, County Councillor.

In 1946, John Tapper sold the mill to Mr and Mrs McMullen. Between 1960 and 1967, there were Jesse's again at the mill. During this time, Harold Bishop Jesse and his wife Kate Jessie Jesse (nee Sayers), known as Kitty, lived there with their two daughters, Mary and Evelyn. Harold was the son of Richard Jesse, the older brother of William Jesse the miller, and was therefore Richard Bishop's great-grand-son. Richard Jesse lived at Little Hartgrove Farm. Harold's older brother, George, joined the Dorset Yeomanry in 1908, and later served in the First World War with the 3rd Dorsets, being badly gassed in May 1917.

In 1967, H. B Jesse Limited sold the mill to Captain Alexander Henry Maxwell-Hyslop G.C. and, in 1978, the mill was sold to Philip Jordan Spink (of the coin dealers, Spink & Son).

He died soon after, and there were then a succession of owners, believed to be Michael Caborn-Waterfield (Dandy Kim) and Mark Culme-Seymour and Barry Fairchild.



The views expressed in this publication by contributors are not necessarily those of the Editor or of the Committee of The Gossip Tree. Last copy date for the next issue is **Sunday 21st May 2017**. Contributions for consideration should be submitted as early as possible to the Editor, Chris Bellers, via e-mail to chris.bellers@hotmail.co.uk or phone 811734. Please also contact the Editor if, rather than have your Gossip Tree delivered to you, **you would like to be emailed a copy and benefit from seeing the pictures in colour** (while also saving us printing costs), or if you would like to sponsor an issue (cost £30).